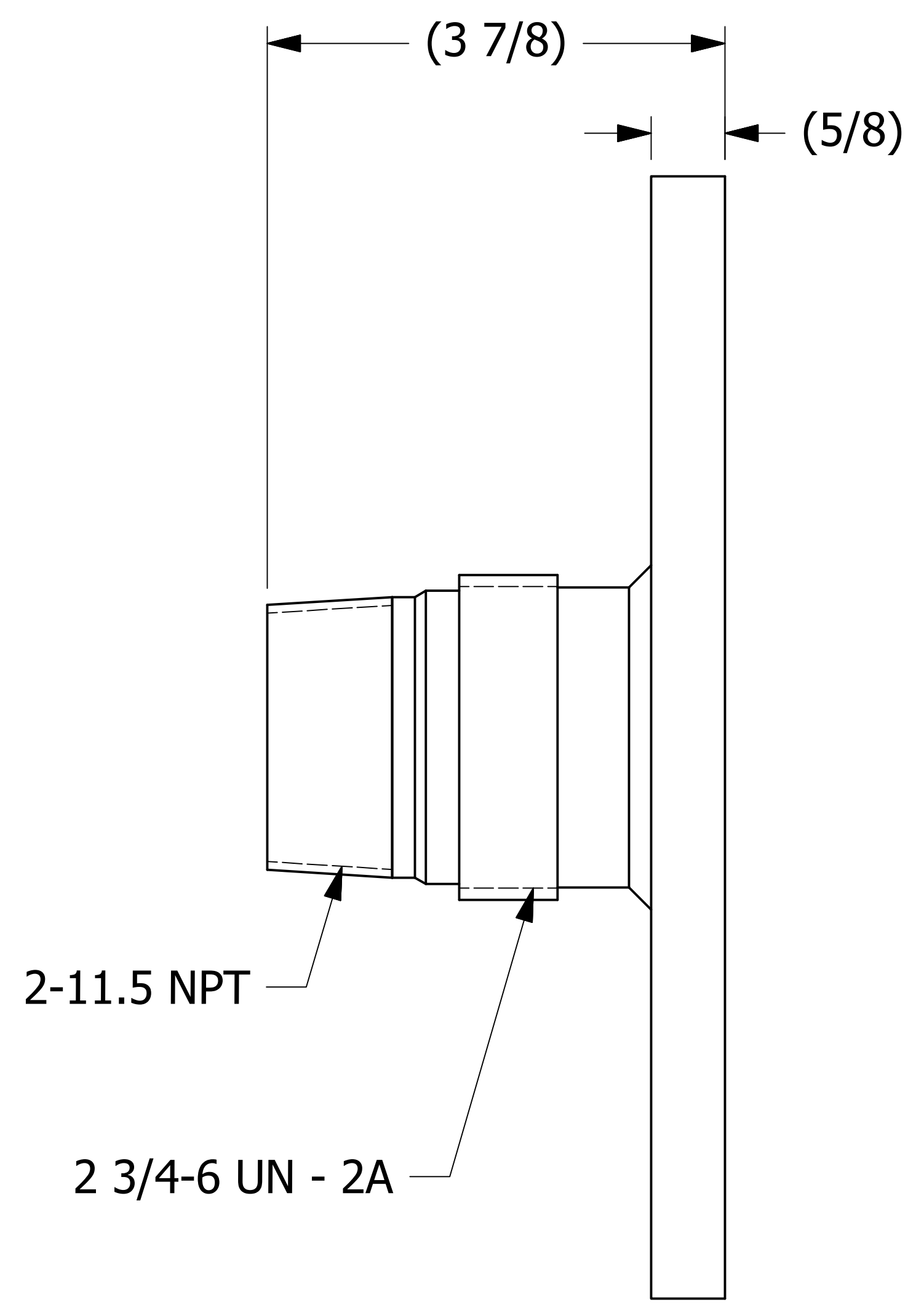
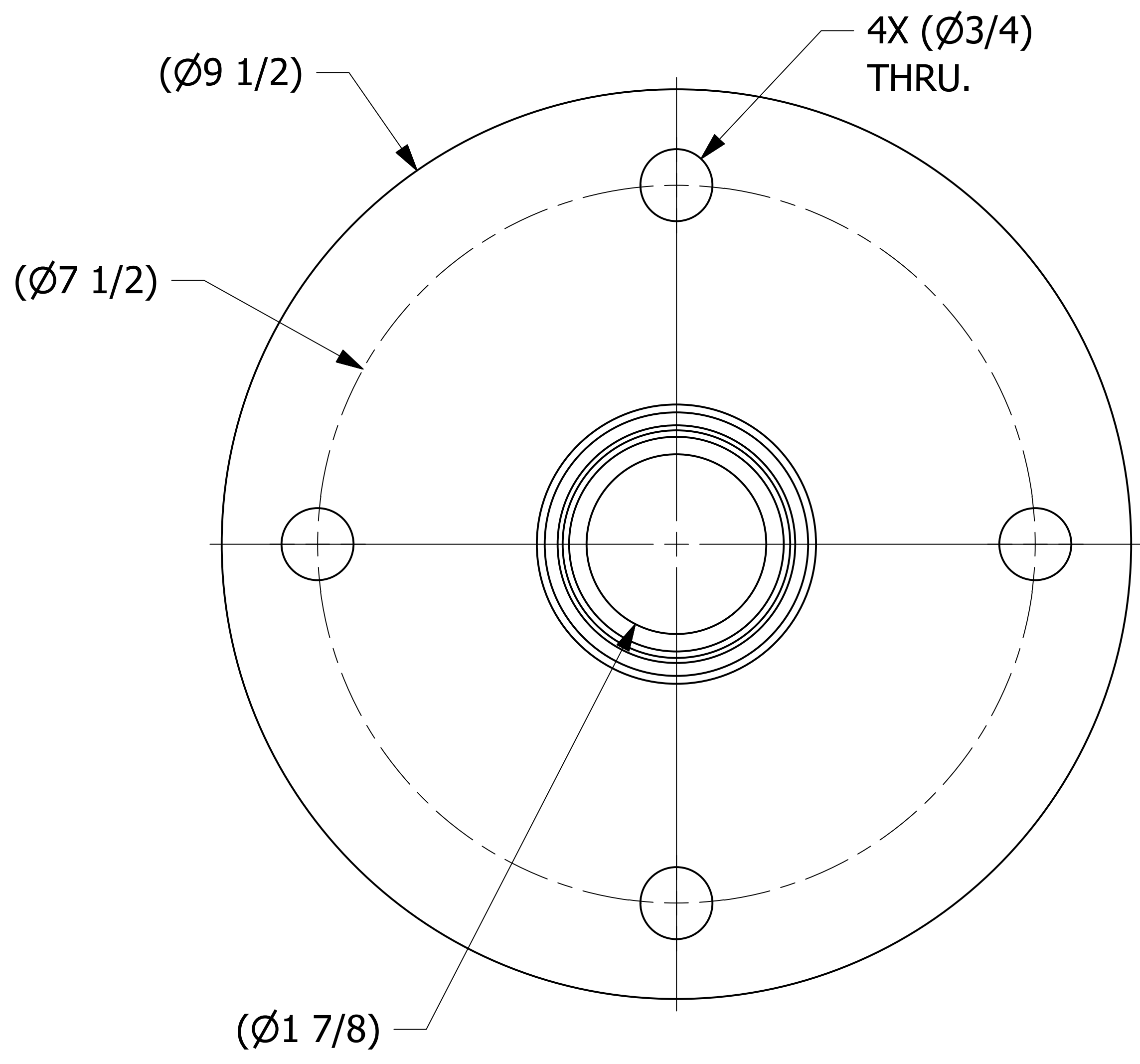


SALES DRAWING SALES DRAWING SALES DRAWING SALES DRAWING SALES DRAWING

SALES DRAWING SALES DRAWING SALES DRAWING SALES DRAWING SALES DRAWING



UNLESS OTHERWISE SPECIFIED DIMENSIONAL TOLERANCES	DRAWN BY:	WEB
FRACTIONAL: ±1/16	CHECKED BY:	CHL
X.XX: ±.03	PROTOTYPE DATE:	9/3/2013
X.XXX: ±.015	APPROVED FOR PRODUCTION BY:	WEB
ANGULAR: ±1°	PRODUCTION DATE:	9/5/2013
DEBURR ALL SHARP EDGES. ALL MACHINED SURFACES TO HAVE A 125 RMS FINISH UNLESS NOTED OTHERWISE.	SIZE:	D
THIRD ANGLE PROJECTION	DRAWING #:	37104

B	WEB	12/18/19	201912180923	WEB
REV	BY	DATE	REF #	PUB
SALCO PRODUCTS, INC.				
PART NAME: QUICK CONNECT 2" FLANGED				
MATERIAL: 316L SS				
PROJECT #: 130828FR1			SHEET #: 1 OF 1	SCALE: 1 : 1
PART #: TE2S75FASH2				